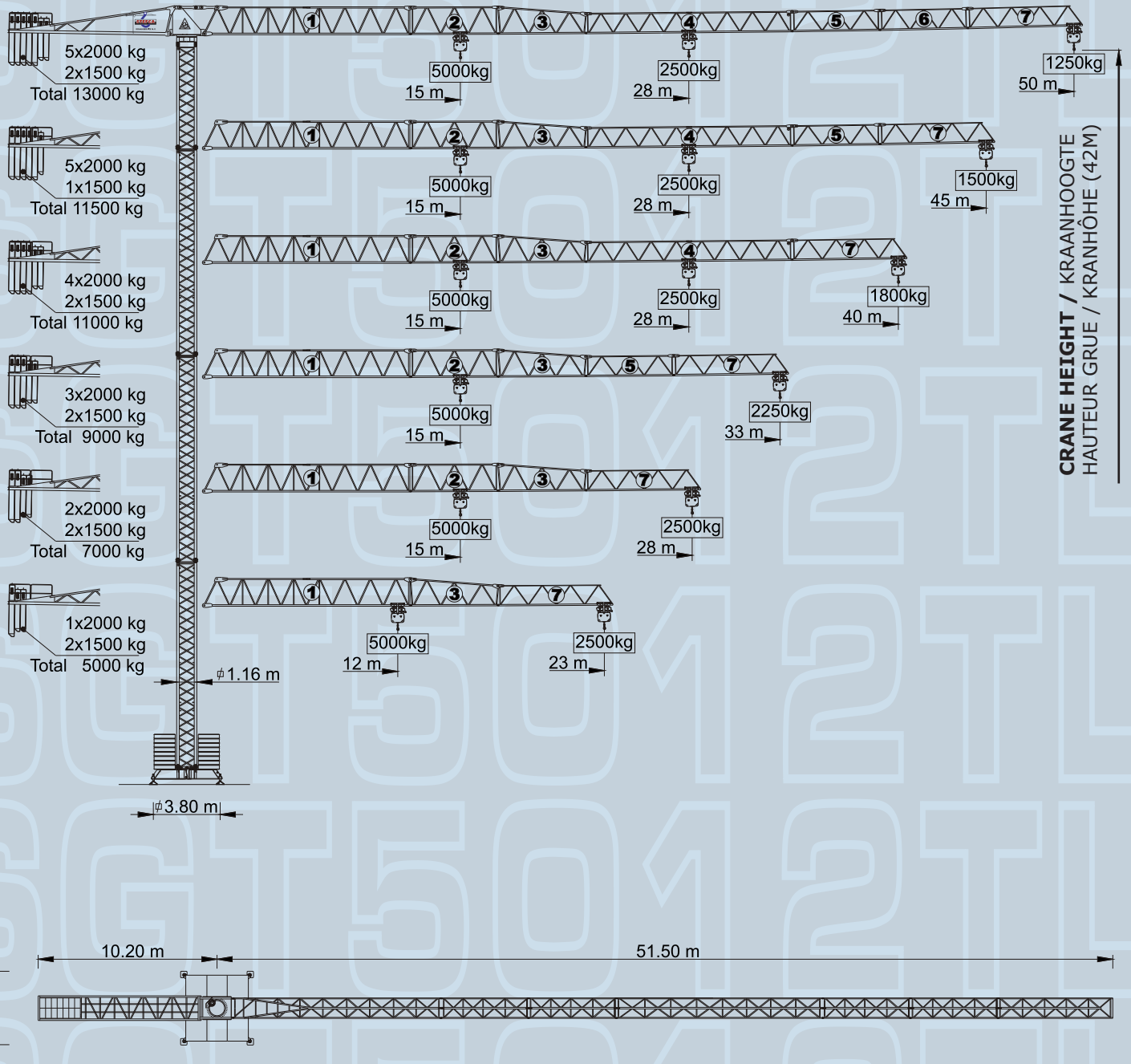


SGT 5012 TL



CE

TOWER CRANE

TORENKRAAN / GRUE A TOUR / TURMKRANE



**CHARACTERISTICS / EIGENSCHAPPEN / CARACTERISTIQUES / KARAKTERISTIEK**

| MOTION / BEWEGINGEN MOUVEMENT / ANTRIEB | | SPEED / SNELHEID VITESSE / GESCHWINDIGHEID | MOTOR POWER / MOTOR KRACHT PUISSANCE / LEISTUNG |
|--|--|--|---|
| HOISTING / HIJSEN LAVAGE / HEBEN | | 0 a 68 m / min. | 11 kW |
| | | 0 a 34 m / min. | |
| SLEWING / ZWENKEN ORIENTATION/ SCHWENKEN | | 0 a 1 r. p. m. | 2x3 daN.m |
| TROLLEYING / LOOPKATRIJDEN DISTRIBUTION / KATZFAHREN | | 0 a 60 m/min. | 3 kW |
| TRAVELLING / KRAANRIJDEN TRANSLATION / KRANFAHREN | | 15m / min. | 2x2 kW |
| TOTAL INSTALLED POWER / TOTAAL VERMOGEN PUISSANCE TOTALE DES MOTEURS / GESAMT-MOTOREN LEISTUNG | | | 26 kVA |
| VOLTAGE / VOLTAGE LE VOLTAGE / BEITRIEBSSPANNUNG | | | 400 V ± 5% (50 Hz) |

**REACTIONS / REACTIES / REACTIONS / ECKKRAFTEN**

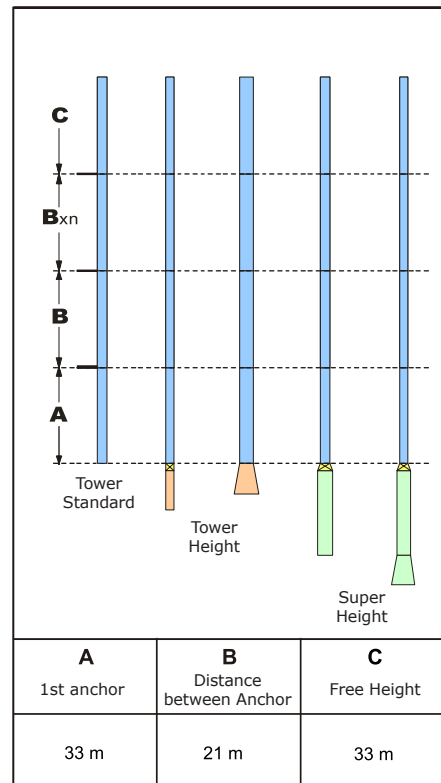
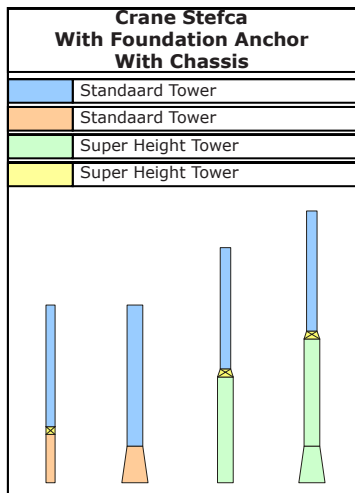
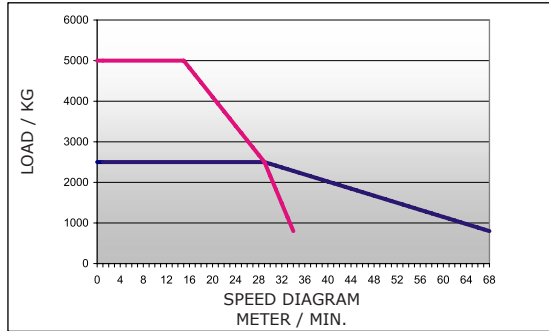
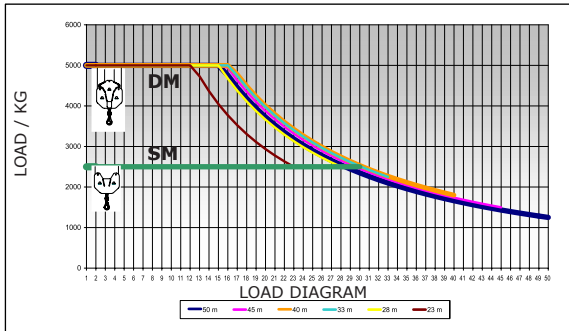
| A | | | B | | | C | | | |
|----------|---------|---------|----------|---------|---------|----------|-----------|---------|----------|
| H m | Z kN | P kN | H m | Z kN | P kN | H m | Mv kNm | P kN | Rh kN |
| 27 | 400 | 442 | 27 | 400 | 442 | 27 | 927 | 351 | 53 |
| 30 | 400 | 460 | 30 | 400 | 460 | 30 | 965 | 360 | 59 |
| 33 | 500 | 513 | 33 | 500 | 513 | 33 | 1007 | 368 | 65 |
| 36 | 500 | 534 | 36 | 500 | 534 | 36 | 1099 | 377 | 71 |
| 39 | 600 | 608 | 39 | 600 | 608 | 39 | 1364 | 386 | 76 |
| 42 | 750 | 687 | 42 | 750 | 687 | 42 | 1595 | 395 | 82 |

1 kN = 100 Kg

L
2
1
0
5
T
G
S

LOAD DIAGRAM / GEWICHT DIAGRAM
CHARGE DIAGRAM / TRAGFAHIGKEIT DIAGRAM

SPEED DIAGRAM / SNELHEID DIAGRAM
VITESSE DIAGRAM / GESCHWINDIGKEIT DIAGRAM



| Standaard Tower | Masts Adapter | Especial Tower (Model) | FREE HEIGHT (M) | | | | | | |
|-----------------|---------------|-------------------------|-----------------|----|----|----|----|----|----|
| | | | 46 | 49 | 52 | 55 | 58 | 61 | |
| M | | | | | | | | | |
| 42 | 0,6 | SGT 150 | 3 | 6 | 9 | | | | |
| | | SGT 150 + Masts Conisch | | | | 12 | 12 | 6 | 12 |