

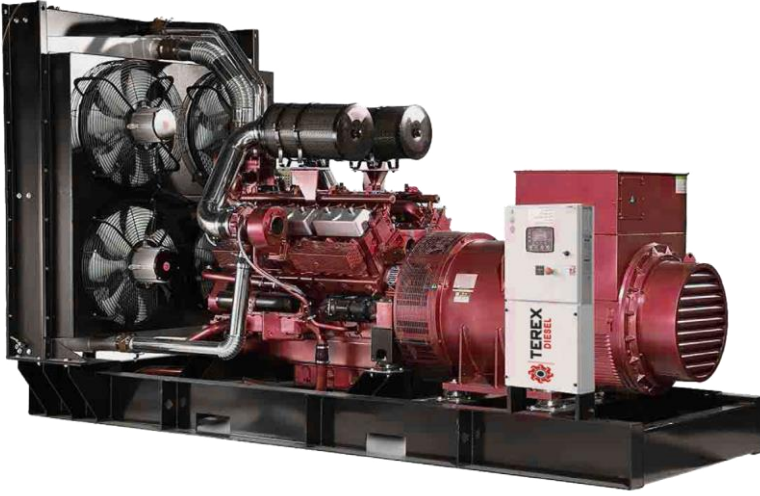
# TRX-S-1100

## Diesel Generator



# TEREX

## DIESEL



### Generator Features

- 4 stroke 1500 rpm water cooled heavy duty diesel engine
- Radiator capable of cooling up to 50 °C
- 4-pole synchronous type, single bearing, brushless alternator
- Flexible fuel hoses and oil drain valve
- Welded steel sheet, powder coated electrostatic powder coated chassis
- Dry type replaceable air filter
- MEngine jacket water heater
- Chassis integrated fuel tank
- Industrial type silencer
- Electronic battery charger
- Electric circuit diagram
- Operation and maintenance manual
- Manual start protection system
- Battery and cables

### Prime Power

Limited time operating power under variable load. It is used as backup power in case of mains power outages. Overloads are not allowed.

### Standby Power

Continuous operating power under variable load. According to ISO 3046 standard, 10% overload is allowed in 12 hours operation.

### Generator Features

		Prime	Stand-by
Power	kVA	1000	1100
Power	kW	800	880
Generator Model	TEREX-S / TRX-S-1100		
Engine Model:	SST28H1100		
Fuel Type:	Diesel		
Frequency:	50 Hz		
Power Factor:	Cos $\Phi$ = 0.8		
Voltaj:	400/231 V		
Dimensions		With cabin	Without cabin
Lenght	mm	5000	4400
Heigh	mm	3470	2550
Width	mm	2000	1800
Weight	kg	9350	7625
Fuel Tank Capacity	lt	H 1500	H 1500

H: External

K: Container

TBA: to be aaded



# TEREX

## DIESEL



0850 532 63 20

Dudullu OSB Mah. İmes B Blok, 205.sk. No:31 Ümraniye/İstanbul

| [www.terexgen.com.tr](http://www.terexgen.com.tr)

# TRX-S-1100

## Diesel Generator



# TEREX

## DIESEL

### Engine

Engine Brand		SDEC
Engine Model:		SST28H1100
Engine Type:		4 Stroke Diesel Engine
Engine Stan-by Power:	kWm	726
Engine Prime Prime:	kWm	660
Cylinder Arrangement:		6L
Total Cylinder Arrangement:	lt	32,8
Cooling System:		Water
Broke-Stroke:	mm	180 x 215
Compression Ratio:		15:1
Aspiration:		Turboşarj, Intercooler
Governor Type:		Electronic
Electrical System:	VDC	24
Lubricant Oil Capacity:	lt	75
Coolant Capacity:	lt	175
Frequency Lt:	Hz - d/dk	50 - 1500
Jacket Water Heater:	quantityx W	1 x 2000
Battery:	quantityx AH	2 x 200
Charge Alternator Current:	A	55
Injection System:		Direct
Cooling Air Flow:	m7/dk	TBA
Combustion Air Flow:	m7/dk	TBA
Exhaust Gas Flow:	m7/dk	152,6
Exhaust Gas Temperature:	°C	680
Fuel Consumption Under 100% Load:	lt/s	163,7
Fuel Consumption Under 75% Load:	lt/s	123,9
Fuel Consumption Under 50% Load:	lt/s	84,9

### Alternetör

Phase / Pole Number:		3/4+
Excitation System:		Self Excited, Brushless
Voltage Regulator:		A. V. R. (Automatic)
Voltage Regulation:		±%1
Insulation Class:		H
Protection Class:		IP23
Connection Type:		Star
Frequency:	Hz	50
Power Factor:		Cos $\Phi$ = 0,8
Total Harmonic Distortion (No Load):		< % 3.5
Output voltage:	VAC	231/400

TBA: to be added



# TEREX

## DIESEL



0850 532 63 20

Dudullu OSB Mah. İmes B Blok, 205.sk. No:31 Ümraniye/İstanbul

| [www.terexgen.com.tr](http://www.terexgen.com.tr)

# TRX-S-1100

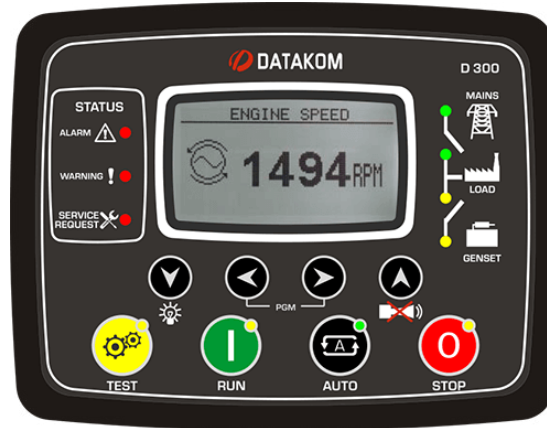
## Diesel Generator



# TEREX

## DIESEL

### Control Panel



**Datakom D300**

#### Datakom D300 Automatic Control Module

AMF function ATS function

Remote start function Manual start function Engine control function

Suitable for remote monitoring

#### Mains and Genset LL- LN Voltages

Mains and generator frequency Mains and genset phase currents Mains and generator neutral currents

Grid and generator phase and total, kW, kVA, kVAR  
Power factor, engine speed, battery voltage and more

#### Connections

3 phase 4 wire, stars & delta

3 phase 3 wire, 2 current transformer

2 phase 3 wire

1 phase 2 wire

#### Communication

RS232 – 485 connection with cable J1939-CANBUS

GSM / GPRS connection Ethernet connection

Modbus RTU

#### Protection Functions

- Overvoltage
- Low voltage
- Voltage asymmetry and phase sequence High frequency
- Low frequency Short-circuit current Overcurrent
- Power factor
- Coolant temperature Low oil pressure

#### Auto Panel Features

- Automatic generator, grid control and fault monitoring Easy control with a user-friendly interface from the panel screen
- Remote operation with optional communication cards Manual programming with password-protected service interface
- Manual control of generator and transfer panel with buttons on the front panel
- Front panel protection class IP65
- With an operating temperature of -20 C to +70 C and a storage temperature of -40 C to +80 C



# TEREX

## DIESEL



0850 532 63 20

Dudullu OSB Mah. İmes B Blok, 205.sk. No:31 Ümraniye/İstanbul

| [www.terexgen.com.tr](http://www.terexgen.com.tr)